

Part 1: Peace and Unification

Q1 [Explanation]



38th parallel was originally intended to divide up the tasks of ridding Korea of Japanese forces and maintaining administrative control of Korea during the transition. It also served to aid the US side in keeping the Soviets from completely annexing the peninsula. The 38th parallel was chosen by the US to keep Seoul within US control. Surprisingly, the Soviets agreed to the terms. There had even been discussions about giving control of Korea back to the Korean people once the Japanese were gone. However, with the looming confrontation between the US and the Soviet Union, the complete freedom of Korea became even more unlikely. The US encouraged the election of Syngman Rhee in the south and the Soviets supported the rise of Kim Il-Sung in the north. Tensions continued to mount between the US and the Soviet Union.

Q1

In 1945, two days after the USA had dropped the first atomic bomb on Hiroshima, Japan, the Soviet Union declared war on Japan. Soviet troops quickly moved into the Korean Peninsula to establish administrative control over the area. Alarmed by the quick advance, the US proposed a way to divide up the Korean peninsula with the Soviet Union to help rid the area of the Japanese. Where did they establish a boundary between the Soviet and US forces?

A1 Taebaek Mountain range, 38th parallel, Bukhan River, Maginot Line

Q2 [Explanation]



On June 25th the KPA army crossed the 38th parallel with tanks and artillery and quickly started to overrun South Korea. The southern ROK forces were not as well trained for war and quickly retreated. The North Koreans would have probably secured the entire peninsula if UN forces had not intervened. The US interest in Korea was mostly to keep Japan secure and limit the USSR's influence. Initially, UN forces were driven back until they occupied only a small part of the peninsula in South Korea. Eventually, the UN forces were able to turn the tide and almost took control of the entire peninsula until China decided to enter the conflict when UN forces came close to the Chinese border.

Q2

During the late 1940s, the two separate Korean jurisdictions were thought to be temporary by the Korean people. Unfortunately, all efforts to establish a unified government failed, as the ideologies of capitalism and communism were unbridgeable. How did the Korean war begin on June 25th, 1950?

A2 ROK South Korean forces attacked North Korea, KPA North Korean forces invaded South Korea, Soviet forces started bombing Seoul, Chinese forces started building up in North Korea leading to a UN response

Q3 [Explanation]



The Korean Armistice Agreement was between the United Nations Command, the Korean People's Army for North Korea and the Chinese People's Volunteer Army. The Armistice Agreement was a cease-fire to allow the sides to draft a peace treaty that was supposed to be drafted soon after the Armistice Agreement was signed. However, a peace treaty still has not been reached and North and South Korea are still technically at war. Also, South Korea's president Rhee never signed the Armistice Agreement because he did not accept Korea as being divided. Rhee wanted to completely unify the peninsula but would be unable to do so without the support of the UN forces. Kim Il-Sung also did not want to sign an armistice, as he also wanted complete control of Korea. Kim Il-Sung finally signed the Armistice as the Chinese and Soviets wanted the fighting to cease. Another provision in the Armistice was the swapping of prisoners of war.

Q3

On the 27th of July 1953, the Korean War had a cease-fire with the signing of which document, which also established the Korean Demilitarized Zone (DMZ)?

A3 Seoul Korean Peace Treaty, Beijing Treaty, Camp David Accords, Korean Armistice Agreement

Q4 [Explanation]



The Joint Security Area was established as the place for negotiation to take place and it is the only place that the North Korean and UNC forces meet face to face. The JSA has several administrative buildings including conference rooms which were built on top of the DMZ line. Within these conference rooms, there are even tables that are situated directly over the DMZ line so that each side can sit on their own soil. The JSA is a relatively small area less than a kilometer in diameter. While an uneasy peace has mostly been kept within the JSA, violence has occurred through the years, especially in the 50s and 60s.

Q4

The Korean Demilitarized Zone (DMZ) is a 250 km line that goes from coast to coast dividing the Korean peninsula between North Korea and South Korea. The line is 4 km wide and devoid of most human habitation. There is a meeting point within the DMZ where the sides can communicate. What is this area called?

A4 The Pit of Despair, Armistice Village, Joint Security Area, Korean Unification Sector

Q5 [Explanation]



The “Bridge of No Return” was set up by the Armistice agreement as a way for prisoners of war to decide if they wanted to stay on their captured side or cross the bridge back to their native side. The “No Return” part was due to the fact that once the prisoners of war crossed the bridge, they were never allowed to cross back over if they later changed their minds. The last POW crossed the bridge in 1968. A remarkable conflict took place in August of 1976 on the bridge when two American soldiers went to cut down a few branches that obscured their view. However, since their “landscaping” caused them to cross the line they were subsequently shot and killed by the North Koreans. This is known as the Korean axe murder incident which launched Operation Paul Bunyan by the US forces where the entire offending tree was chopped down.

Q5

In 1968 the “Bridge of No Return” within the Korean Demilitarized Zone was used for the last time serving its main purpose. What function did the bridge serve?

A5 It was used for public executions, Prisoners of war used it to cross back home, It was where final treaty talks were held, The coconut laden swallow question was finally answered correctly

Q6 [Explanation]



While there are citizens who actually live in the South Korean village of Daeseong-dong within sight of North Korea, no one appears to live in the North Korean counterpart Kijong-dong. This makes the electric lights bizarre, as very few places in North Korea have electric lights outside of the capital city of Pyongyang. So lighting up a fake city is both eerie and odd indeed. When observed with a telephoto lens, one can see that there is actually no glass within the windows!

Q6

North Korea and South Korea both have a village inside the demilitarized zone within sight distance of each other. What is one thing that is unusual about Kijong-dong, the North Korean village?

A6 It is actually part of China, It has an airstrip, It has electric lights, It has the largest clock tower in Korea

Q7 [Explanation]



An archery contest has not been used to determine which side is better. However, building the tallest flagpole has been a spirited effort on both sides. In 1980 South Korea built a 98-meter tall flag pole to wave a flag easily seen from the North Korean side. Not to be outdone, the North Koreans built their own 160-meter tall flag pole. Both sides have used loudspeakers on either side of the DMZ to broadcast propaganda for their side as well as patriotic music. For years both sides used balloons with leaflets to try and convince the other side to defect however, both governments have stopped this practice.

Q7

One of the common occurrences within the Korean Demilitarized Zone is seeing which side is “greatest”. Which of the following has not been used to compete against each other within the DMZ?

A7 Using balloons with propaganda, Building the tallest flag, An archery contest, Using loudspeakers for propaganda

Q8 [Explanation]



Over the years, hundreds of thousands of civilians have taken part in guided tours of the JSA. There are strict rules that must be followed to protect tourists from injury, and even death. Crossing the DMZ line or even waving a hand at the North Korean soldiers could be considered a provocative threat and could result in being shot. It is recommended to not even look at the North Korean soldiers or take any photographs. It seems like a rather dangerous place to want to visit on holiday!

Q8

While both sides are still technically at war, and the Joint Security Area has erupted in violence several times over the years, the Truce Village has still been a popular tourist attraction for civilians.

A8 True or False

Q9 [Explanation]



The DMZ runs from Ch’ogū in the East to Panmunjom in the West. The Panmunjom section is ‘policed’ by both North and South Korea and stands no more than 50 meters away from each other.

Q8

How long is the truce line that bisects the Korean peninsula, or in other words the Demilitarized Zone (DMZ)?

A9 267 miles, 178 miles, 148 miles, 211 miles

Q10 [Explanation]



Sources suggest a total of 900,000 soldiers from all sides died in combat in one form or another. The fighting came from the US-led forces in South Korea who fought the North Korean forces backed by China. It became attrition warfare which later led to a standstill when the armistice was declared.

Q10

What was the estimated number of soldiers killed by the end of the Korean conflict?

A10 850,000, 900,000, 1,000,000, 950,000

Q11 [Explanation]



The unexpected decision of China to enter the war early in October turned the tide of the war. The Northern units, consisting of Sino-Korean troops, sent the UN forces retreating once again. On December 6, the Communist forces reclaimed Pyongyang. And by the end of December, they crossed the parallel once more and reclaimed Seoul.

Q11

When did the Chinese join the conflict?

A11 September 1950, October 1950, September 1951, November 1951

Q12 [Explanation]



Truman believed in containment and this angered McArthur, who openly criticized the decision. In April 1951 he was given an order by his commander which led him to no longer participate in the war.

Q12

January 25th, 1951 saw UN attacks forcing communist troops out of South Korea and past the 38th parallel. General McArthur advocated for trying to drive the communists back into China and expanding conflict there, but who stated that containment was better suited to ending the war?

A12 Harry Truman

Q13 [Explanation]



Truce talks started but the battles carried on, many battles raged and famous scenes such as Bunker Hill and Bloody Ridge where tens of thousands of troops were killed or wounded took place.

Q13

What event took place on July 10th, 1951 that started a two-year-long process to peace?

A13 UN advances into North Korea, Talk of atomic bombing of Korea by UN, North Korean supplies of ammo becoming depleted, Truce talks

Q14 [Explanation]



US Army Lt. General William K. Harrison and Lt.Gen. Nam II of the North Korean People's Army signed the pact within the confines of the DMZ in Panmunjom. Three tables were set up, with the middle table laid out for South Korean officials to sign. However, they were not in attendance.

Q14

What were the names of the two men who officially signed the armistice on the UN's and North Korea's behalf?

A14 Lt. Gen Walter C. Webb & Lt.Gen. Pak Ho, Lt. Gen James S. Porter & Lt. Gen. Kung Yung, Lt. Gen. William K. Harrison & Lt.Gen. Nam II, Lt. Gen Scott L. Powers & Lt. Gen. Hjung Yip

Q15[Explanation]



Kim Jong Il decided to threaten the US after it was reported that the North Korean government had begun uranium mining and more research into its own nuclear capability. He stated that he had fixed targets on the West Coast of America. Naturally, the US was not amused by such a statement and started to monitor the North Korean program with a vested interest.

Q15

Which North Korean leader threatened the United States verbally after Pyongyang reactivated the North Korean nuclear program in 2002?

A15 Kim Jong Il

Q16[Explanation]



The first cross-border crossing was opened to the South to allow tourists to visit the North's Mount Kumgang resort area.

Q16

Which historic 'gesture' by the North Korean authorities took place on February 5th, 2003?

A16 A cross border road was opened, An underground tunnel for spying missions was destroyed, 1000 North Koreans were allowed to live in South Korea, Rubber bullets replaced live ammunition in all rifles

Q17 [Explanation]



This policy was endorsed by Kim's successor Roh Moo-hyun. The policy was an agreement about economic cooperation, cultural exchanges and cross-border visits for families that were split up by the DMZ.

Q17

A17 In 2000 South Korean President Kim Dae Jung met with his North Korean counterpart at an inter-Korean summit. They agreed upon a number of issues that emerged from Dae Jung's policy of engagement with the North. What was the name of that policy? **Sunshine**

Q18 [Explanation]



Seoul somewhat straddles the present-day border between the North and South and since it is an important city, its control was fought over incessantly. Once the war ended, over half of the city was destroyed, half of its people homeless and its population with millions of refugees from the North.

Q18

How many times did the city of Seoul change hands between North Korea and South Korea during the Korean War?

A18 Never, **Four times, About a dozen, Over fifty**

Q19 [Explanation]



Many of the towns surrounding Seoul that were annexed were extremely rural and had little to no industry or systems of transportation. It took billions in investment and years of construction before the newer areas blended in with the rest of the city.

Q19

As Seoul began to revive itself after the Korean War, it annexed many of the smaller towns around it. However, even though this greatly increased the population and was beneficial in the long run, what short-term problem did this expansion cause?

A19 The city spent billions industrializing what were mostly rural areas. The annexation of these towns started another war with North Korea. The people who lived in these annexed towns rebelled. The city could no longer make good on its tax break promise.

Q20 [Explanation]



Syngman Rhee was the leader of American-backed South Korea.

Q20

Who was the leader of South Korea at the time of the Korean War?

A20 Kim Il Sung, Syngman Rhee, Mao Tse Tung

Q21 [Explanation]

The US was concerned that a communist Korea would then encourage Japan, to become a communist nation as well. which was an important American trading partner.

Q21

As per the domino effect, if Korea became a communist country, which country did the US fear would follow suit?

A21 Vietnam, Japan, Taiwan

Q22 [Explanation]



Since 15 November 1974, South Korea has discovered four tunnels crossing the DMZ that had been dug by North Korea.

Q22

How many invasion tunnels have been found that North Korea has dug into South Korea?

A21 4

Q23 [Explanation]

The consistent keynote of our unification policy can be summarized as OOO reunification through procedures, freedom of all members of the nation, and unification in which human rights and national prosperity are guaranteed.

[Answer] peaceful, democratic

Q23

The following is a description of the keynote that the Korean government's unification policy has maintained. Write the words that best fit OOO and in the description.

Q24 [Explanation]

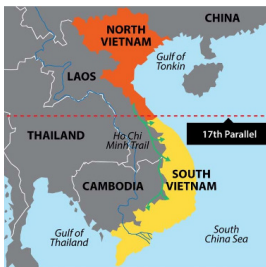


Q24

For the first time in history, a North Korea-United States summit was held in Singapore on June 12, 2018, and an agreement was made on new US-DPRK relations, a peace regime, North Korea's denuclearization, and the repatriation of US POW/MIA remains. Which is correct about the negotiating partners in the summit?

- ① President Obama-Kim Jong Un, chairman of the State Affairs Committee
- ② **President Trump-Kim Jong Un, chairman of the State Affairs Committee**
- ③ President Clinton-Kim Jong-il, chairman of the National Defense Commission
- ④ President Bush-President Kim Il-sung

Q25 [Explanation]



North Vietnam and South Vietnam were unified in 1976, and Germany was unified in 1990. Yemen was unified in 1990; with the Yemen Civil War breaking out in 1994, however, South Yemen is in the midst of a re-separation movement.

Q25

Which nation, among the divided nations, was unified first after the Second World War?

A25 Vietnam

Q26 [Explanation]



The 1954 Geneva Conference was held for the unification of the Korean Peninsula. It was the first international conference to be attended by both South and North Korea in the wake of the Korean War.

Q26

Write the name of the conference that was held in 1954 to settle outstanding issues resulting from the Korean War.

A26 The Geneva Conference.

Q27 [Explanation]



The paragraph above is part of Resolution No. 83 of the UN Security Council, a major organization of the UN that assumes primary responsibility for the maintenance of international peace and safety. When North Korea invaded South Korea in 1950, the UN Security Council immediately identified North Korea as the invader and passed a resolution for the stoppage of the war and provision of military support for the Republic of Korea. As a result, the war became an international war with the entry of the UN into the war, and the UN troops carried out the Incheon Landing Operation and reclaimed Seoul.

Q27

What is the name of the organization in the United Nations that announced the following resolution when the Korean War broke out?

A27 UN Security Council (or United Nations Security Council)

We pay attention to the report of the UN Temporary Commission on Korea that North Korean authorities did not stop the act of war and did not have its troops retreat to the north of the 38th Parallel North, and urgent military action is needed for the restoration of international peace and safety..... We recommend that the member nations of the United Nations provide the support necessary for repelling the armed attack in this region and restoring international peace and safety.

Q28 [Explanation]



Q28

Which of the following countries did NOT feature among the UN Forces dispatched to Korea during the Korean War?

A28 ① The United States ② Australia ③ Turkey ④ India

Q29 [Explanation]



Pablo Picasso drew a picture titled “Massacre en Corée” to disclose the terrible scene of the massacre of civilians that occurred in Sincheon, Hwanghae Province from October to December 1950.

Q29

Write the name of the painter who drew a picture titled “Massacre en Corée” with the theme of the massacre of civilians that occurred during the Korean War to disclose the cruelty of war.

A29 Pablo Picasso or Picasso

Q30 [Explanation]



On Sep. 24, 2019 (US local time), President Moon Jae-in proposed that the UN and all its member nations work together to make this region of the Korean peninsula an “international peace zone” in a keynote speech in the UN General Assembly held in New York. President Moon emphasized that the DMZ is a symbol of the tragedy caused by the military confrontation for nearly 70 years, but that, at the same time, it has been transformed into a treasure of natural ecosystems and a historical space whose value has to be shared with all nations of the world as a common heritage of mankind (Source: NUAC blog)

Q30

Write the name of the region being described below.

In September 2019, in a keynote speech at the UN General Assembly, President Moon Jae-in proposed that the UN and all its member nations work together to make this region of the Korean peninsula an “international peace zone.” This region was a symbol of the tragedy caused by the military confrontation for nearly 70 years after the Korean War but has recently been changed into a treasure of the natural ecosystem.

A30 The Demilitarized Zone (DMZ)

Q31 [Explanation]



Q31

Which of the following incorrectly states the basis of the “Unification Plan of the Ethnic Community of Korea?”

- ① Peaceful unification by democratic procedures.
- ② Unification that guarantees the freedom, human rights and prosperity of the people.
- ③ A South and North confederation composed of one people and two systems that admits different systems between the two Koreas.
- ④ Construction of the Ethnic Community of Korea through the expansion of reconciliation, exchange and cooperation, and phased unification based on those achievements.

Part 2 :History of the Republic of Korea

Q1 [Explanation]



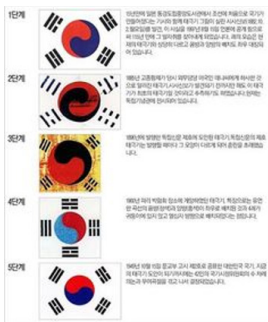
On July 27, 1953, the United Nations Command reached an armistice with China and North Korea.

Q1

When did the Korean War end?

A1 July 27, 1953

Q2 [Explanation]



The flag of South Korea is also called Taegukgi, which means the supreme, ultimate flag. The flag features three parts put together: 1. White rectangular background, 2. Red and blue Taeguk, which is a symbol of the universal balance, in relation to the concept of Yin and Yang, and 3. Four black trigrams from the original eight, one pointing toward each corner. These trigrams accentuate the yin-yang character and are also representative of the seasons in South Korea. The flag was adopted on January 25, 1950. The white background in the flag represents peace and unity.

Q2

When was the Korean flag adopted?

A2 January 25, 1950

Q3 [Explanation]



In the film Forbidden Dream, we can see famous scientist Jang Yeong-sil building a water clock. But to tell the time, you also needed to know the 12 (shibiji) animals of the Chinese zodiac! The times of day were divided up into 12 two-hour blocks. And the 12 animals of the Chinese zodiac (shibiji) described these blocks. So as well as taking turns to represent a Lunar year, each animal represented a time of day.

Q3

How did people tell the time in the Joseon period?

A3 Shibiji

Q4 [Explanation]



Silla, located in the southeast, around today's Pusan, was initially an ally of Tang China and assisted in the conquest of Silla (660) and Koguryo (668). Silla then turned against China and supported resistance movements in the conquered territories. When Tang forces withdrew to confront more serious threats from the Tibetans and (later) the Eastern Turks, Silla was able to unify most of the Korean peninsula under its own control.

Q4

Which of Korea's "Three Kingdoms" survived the Chinese invasions of the seventh century AD?

A4 Silla, Paekche, Koguryo, None of them survived

Q5 [Explanation]



The Koryo dynasty lasted from 918 to 1392 and was the first to unify the Korean peninsula. "Koryo" is a shortened form of Koguryo and the source of the modern term "Korea."

Q5

Which of these cities was the capital of the Koryo dynasty?

A5 Seoul, Kaesong, Pyongyang, Taegu

Q6 [Explanation]



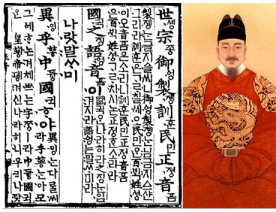
Yi Song-gye (1335-1408) was a Koryo general who seized power and established the Choson kingdom (Yi dynasty) in 1392. His descendants ruled Korea for more than 500 years.

Q6

Who was the founder of Chosŏn dynasty, also called Yi dynasty, Korea's last imperial dynasty (1392–1910)?

A6 Yi Song-gye, Yi Ik, Yi Myong-bok, Yi Won-bom

Q7 [Explanation]



King Sejong was born in 1397 and ruled Korea from 1418 until his death in 1450. He was an East Asian version of the “complete Renaissance man” and is credited with a great variety of reforms and inventions. By far the most important of these is the Korean phonetic alphabet (Hangeul). Before the fifteenth century, literate Koreans wrote in classical Chinese just as Chinese scholars did. King Sejong is also credited with the invention of metallic, movable type, but woodblock printing had originated in China centuries earlier and was already well known throughout East Asia.

Q7

What was the greatest contribution to Korean culture made by King Sejong?

A7 Ondol heating, The Korean alphabet, Kimchi, Woodblock printing

Q8 [Explanation]



These warships bristled with cannon and were roofed over. They thoroughly outclassed the vessels the “dwarf bandits” could deploy against them. Whether or not they were the world’s first ironclad warships is still a matter of debate.

Q8

What secret weapon did the Korean Admiral Yi Sun-sin use to inflict repeated defeats on Japanese invaders in the 1590s?

A8 Turtle ship

Q9 [Explanation]



Yangban meant literally “two groups” -- the civil and military officials. They monopolized high government office and owned most of the land in the country. Unlike the “gentry” in China, their status was hereditary. Other social classes were chungin (lower-ranking government employees), yangmin (commoners, often serf-like tenants on yangban-owned lands), and ch’onmin (“base people,” such as slaves).

Q9

What was the Korean scholar-official class called during the Yi dynasty?

A9 Yangban

Q10 [Explanation]



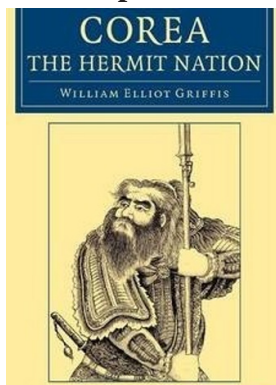
In “East Asia: Tradition and Transformation” (revised edition, 1989) Fairbank, Reischauer & Craig have this to say: “Korea became in many ways an almost model Confucian society, and it came to show some of the strengths and also some of the weaknesses of the Confucian polity in more extreme form than they appeared in China.” (p. 301) Koreans pushed Confucian ritual prescriptions to such an extreme that most people had to wear white (the color of mourning) most of the time.

Q10

What was the dominant social and political ideology under the Yi dynasty?

A10 Buddhism, Legalism, Eastern Learning, Confucianism

Q11 [Explanation]



In 1882 William Elliot Griffis first used the term “The Hermit Nation” to describe Korea. The Joseon dynasty was in control of the Korean peninsula from 1392 to 1897, and their resistance to the outside world led to the Korean dynasty being called the Hermit Kingdom. Eventually, a client kingdom was established with the Qing Dynasty in China where China provided protection and Korea provided tribute, but the Korean king still had some autonomy to run his own country. However, as the Qing started to weaken towards the end of the 19th century, and the Japanese started to gain more power in the area, the Korean peninsula became more of a region of tension between Japan and China. The internal repressiveness of the Joseon Dynasty also caused further unrest with the Korean people resulting in a peasant uprising.

Q11

Until the end of the 19th century, the Joseon Korean dynasty had resisted contact with the outside world, in particular, the West. As a result, which nickname did western writers give the Korean people?

A11 Solitary Korean People, Isolationist Republic, Hermit Kingdom, Autonomous Protectorate

Q12 [Explanation]



In the early 1900s, Russia's only major eastern port was Vladivostok which was frozen over half of the year. The Russians wanted a year-round port in Manchuria. The Russo-Japanese War started in February of 1904 when the Japanese attacked a Russian ship at Port Arthur, Manchuria and led to a year and a half of conflict. Interestingly, the Japanese were looking for an armistice early on, but the Russians refused and continued the fighting. In the end, the Japanese had an overall victory resulting in the signing of the Treaty of Portsmouth in 1905. As a result of the treaty, Korea was recognized as being under Japan's influence. In 1910 Japan went on to annex Korea with the Emperor of Korea ceding his territory to the emperor of Japan.

Q12

At the beginning of the 20th century, Japan was broadening control of the surrounding area, including Korea. At the same time, Russia was looking to expand its eastern ports on the Pacific. Japan wished to keep Russia away from Korea but Russia wanted the northern part of Korea to be considered neutral. This disagreement led to which war?

A12 Korean War, First Sino-Japanese War, Russo-Japanese War, World War II

Q13 [Explanation]



Gongju is a small city only having a population of about 100,000 people in 2004. The proposed move angered many in the nation and the law allowing the move was declared unconstitutional without a national referendum. The government later proposed moving just the legislative and other branches to Gongju and keeping the executive branch in Seoul as a solution to this quandary.

Q13

In 2004, which South Korean city did the government propose moving the capital to in order to slow the increasing population of Seoul?

A13 Gongju, Busan, Incheon, Daegu

Q14 [Explanation]



According to Korean tradition, Dangun Wanggeom was the legendary founder of Gojoseon (or 'Old Joseon'), Korea's first kingdom, in 2333 BC. In some accounts, the capital of Dangun's kingdom was Pyongyang, which is also the capital of present-day North Korea. Dangun later moved his capital to Asadal, speculated to be on Mount Guwol-san in Hwanghae Province. In other accounts, Asadal is named as the original capital of Gojoseon. According to legend, Dangun ruled over his country for 1,500 years, before abdicating. After this, he hid himself in the mountains and became a Sanshin (an immortal mountain spirit) at the age of 1908.

Q14

Who is the legendary founder of the Korean nation?

A14 Taejo Wang Geon, Yi Seong-gye, Dangun Wanggeom

Q15 [Explanation]



The Republic of Korea (commonly known as South Korea) first participated at the Olympic Games in 1948, and has sent athletes to compete in every Summer Olympic Games since then, except for 1980 which they boycotted. South Korea has also participated in every Winter Olympic Games since 1948, except for the 1952 games.

Q15

In what year did South Korea first officially compete at the Olympic Games?

A15 1956, 1948, 1960

Q16 [Explanation]

During the Joseon Period in the 1300s, Seoul was a walled city because tigers would often enter the city and roam around the streets. Today, most of the wall is gone but remnants of it are still in existence, mainly the gates which can be found around several downtown districts.

Q16

What is the English translation of Hanseong, the name Seoul took when it became the Korean capital in 1394?

A16 Northern Capital, Fortress City on the Han, Land of the Koreans, Palace on the Mountain Top

Q17 [Explanation]



Remnants of Wiryeseong can be found in and around Seoul. However, they are located on the South of the Han River while most of the other ancient Korean artifacts and locations are on the north. The Baekje lost control of Seoul as well as all of Korea in 392 to the Goguryeo and they lost the city to the Silla in 551. The Silla then renamed Wiryeseong as Hanyang.

Q17

Seoul was officially founded in 18B.C. when the Baekje Kingdom began building one of its capitals in the area that is today called Seoul. What was the Baekje capital called at this time?

A17 Hanyang, Silla, Seoul, Wiryeseong

Q18 [Explanation]

With the introduction of bronze in about 700 B.C., people were able to set up permanent establishments away from the Han River as water could now be easily transported. This allowed for the beginning of the construction of what would become Seoul.

Q18

Archeologists have found evidence that people have been living in the area where Seoul now stands since at least the Paleolithic Age, several thousands of years ago. But the city proper did not begin to take root and spread out from the Han River until what alloy was discovered?

A18 Bronze, Brass, Iron, Steel

Q19 [Explanation]

The United States quickly became Korea's top trading partner. U.S. companies also jointly owned several Korean electric and water companies, helping Seoul to become the first city in the Orient to have electricity and running water.

Q19

Seoul saw its first glimmer of becoming a major world city when Korea ceased its isolationism in the 19th century. With which foreign world power did Seoul benefit from the most?

A19 United States, France, United Kingdom, Germany

Q20 [Explanation]



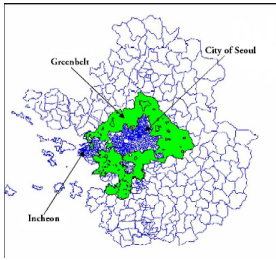
Keijo was run like other major Japanese cities of that time, containing two wards and expanding outwards as it gobbled up smaller cities and towns. Korea remained under Japanese control until it was liberated in the aftermath of World War II.

Q20

In the early 1900s, Japan annexed the Korean peninsula and made it part of the Japanese Empire. What did the Japanese name Seoul while the city was under their control?

A20 Busan, Keijo, Nippon, Taisho

Q21 [Explanation]



Seoul and other large South Korea cities such as Incheon and Busan were expanding rapidly and traffic and air pollution became serious problems. The green belt had little impact, however, and the city continued to expand and as a result, the pollution and traffic worsened.

Q21

In the 1980s, why was a green belt established around the city of Seoul?

A21 To provide a place for the Olympic Village. To create a national park. To supply Seoul with much needed water resources. To prevent urbanization.

Part 3 : Modern History and K-culture

Q1 [Explanation]



BTS (written 방탄소년단 in Korean) stands for Bangtan Sonyeondan. In Korea, Bangtan Sonyeondan actually means Bulletproof Boy Scouts. “Bangtan” specifically means “to be resistant to bullets.”

Q1

The acronym BTS stands for what?

A1 Bangtan Sonyeondan

Q2 [Explanation]



Q2

What are the colors of the South Korean flag?

White, blue, red

Q3 [Explanation]



The first South Korean Won was subdivided into 100 jeon. The Won was initially pegged to the US Dollar at a rate of 15 Won = 1 Dollar. A series of devaluations followed, the later ones due in part to the Korean War. In 1946, the Bank of Joseon introduced 10-won and 100-won notes.

Q3

Which of the following correctly states the South Korean Currency?

A3 Won, Yuen, Dollars, Ringgit

Q4 [Explanation]



Cheongwadae (Korean: 청와대; Hanja: 靑瓦臺; literally “pavilion of blue tiles”), also known as the Blue House, is the executive office and official residence of the Republic of Korea’s head of state, the President of the Republic of Korea, located in Jongno-gu of the capital Seoul. Cheongwadae is in fact a complex of multiple buildings, built largely in the traditional Korean architectural style with some modern architectural elements and facilities. The Blue House is the most protected official residence in Asia.

Q4

Which of the following is the correct name of the executive office and official residence of the Republic of Korea’s head of state, the President of the Republic of Korea?

A4 Gyeongbokgung Palace, NamDaeMun-South Gate, Blue House - Cheongwadae, Deoksugung Palace

Q5 [Explanation]



The tiger holds a deep and heavenly status in the culture of South Korea. In the past, people of the nation even offered penance to tigers while praying to God for rain. Due to the above reasons mentioned earlier, the tiger was named the national animal. The mountainous landscape of Korea was once home to a huge tiger populace, with the end goal that the nation was prominently known as the “land of Tigers.” Korea was additionally once called the “place where there are extraordinary individuals who realize how to tame the tiger,” showing the cozy connection among tigers and the Korean public. From antiquated occasions through the Joseon Dynasty (1392-1897), Koreans have communicated their veneration for tigers differently. For instance, a tiger assumes a conspicuous part in the myth of Dangun, which portrays the introduction of the Korean civilization.

Q5

What is Korea’s national animal?

A5 Siberian Tiger

Q6 [Explanation]



Nabichum (literally ‘butterfly dance’) is a Korean Buddhist dance (Jakbeop) for ritual service. The dance is named after its choreography and costume which resemble the appearance of a butterfly (nabi in Korean).

Q6

The Korean dance called the Nabichum is known by what name in English, because of the costumes worn during the performance?

A6 Butterfly Dance

Q7 [Explanation]



Baduk is a game which was present in Korea by the 5th century. It originated in China, but the West is more familiar with the Japanese name Go. This is because the Japanese were the first to introduce it to the West.

Q7

The Korean board game known as “baduk” has a name that translates into “go” in English. True or False ?

A7 True or False

Q8 [Explanation]



Shin Saimdang (1504-1551) is one of the best-known women in Korean history. She was an artist, writer, calligraphist and poet of the Joseon Kingdom (1392-1910). She became the first woman to appear on a Korean banknote and she has been the face everyone sees on the 50,000 won note since 2009.

Q8

Who is considered the most famous and ‘important’ woman from the Joseon period until now in Korea?

A8 Shin Saimdang

Q9 [Explanation]



Jimjilbang is a 24-hour, gender-segregated bathhouse featuring relaxing hot and cold soaking pools, bathing and massage areas, various saunas, entertainment lounges, and communal sleeping rooms.

Q9

What is a jimjilbang?

A9 A bathhouse

Q10 [Explanation]



Busan, now officially known as Busan Metropolitan City, is South Korea's second-most populous city after Seoul, with a population of over 3.4 million inhabitants. It is the economic, cultural and educational center of southeastern South Korea, with its port—Korea's busiest and the sixth-busiest in the world.

Q10

What is the second most populous city in South Korea?

A10 Busan

Q11 [Explanation]



Literally meaning 'mixed rice,' it's a popular meal consisting of white rice topped with vegetables, beef, a whole egg, and gochujang (red chili pepper paste).

Q11

What is the name of the traditional dish made of rice topped with vegetables and a spicy sauce called?

A11 Bibimbap

Q12 [Explanation]



Q12

What is South Korea's formal name?

A12 Republic of South Korea, Republic of Korea, Democratic People's Republic of Korea, Korean Confederation

Q13 [Explanation]



Gangnam District is one of the 25 local government districts which make up the city of Seoul, South Korea. Gangnam literally means “South of the (Han) River”.

Q13

The song ‘Gangnam Style’ by South Korea musician Psy refers to what?

A13 District in Seoul

Q14 [Explanation]



South Korea and Japan had bid separately but combined into one bid because both nations feared they would split the votes and allow Mexico to win the hosting duties. This was the first time ever that two nations co-hosted the FIFA World Cup.

Q14

Which event did Seoul co-host with Japan in 2002?

A14 The FIFA World Cup, The Winter Olympic Games, The Summer Olympic Games, The Asian Games

Q15 [Explanation]

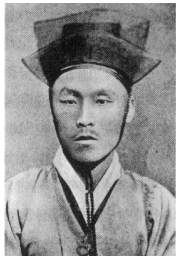


Q15

Where is Korea located?

A15 Eastern Asia, Eastern Europe, South America, Northern Asia

Q16 [Explanation]



Kim and other reformers attempted a coup d'état in 1884, assassinating several conservative ministers and seizing the king. Their actions were thwarted by Chinese troops who rescued the king after clashing with Japanese legation guards. Kim fled to exile in Japan, and was later killed by a fellow Korean during a visit to China in 1894.

Q16

The controversial late 19th-century Korean statesman Kim Ok-kyun is best described as ..?

A16 Chinese-backed conservative. Chinese-backed reformer. Japanese-backed conservative. Japanese-backed reformer.

Q17 [Explanation]



King Sunjong, also known as Emperor Yunghui, lived from 1874 to 1926. He took to the throne when the Japanese forced his father, King Kojong, to abdicate in 1907, and he was himself deposed by the Japanese when they annexed Korea in 1910.

Q17

Who was the last monarch of Korea?

A17 Queen Min, Sunjong, The Taewon'gun, Kojong

Q18 [Explanation]



This policy, implemented during 1940, provides the title for Richard Kim's semi-autobiographical novel, "Lost Names." Before this time, in an effort to destroy the Korean identity and convert Koreans into second-class Japanese, the colonial authorities had already stopped publication of books in Korean as well as the use of the Korean language in schools. The name-change policy was actually opposed by many Japanese residents of Korea because they felt it reduced the social distance between themselves and the locals.

Q18

Near the end of their rule over Korea, Japanese colonial administrators required Korean people to take Japanese names.

A18 True or False

Q19 [Explanation]



The formidable Francesca Donner was born in Inzersdorf, Austria (now part of Vienna) in 1900. She and Rhee were married in New York in 1934, the second marriage for both of them. Historian Allan Millett credits her with persuading her despairing husband to leave Seoul during the North Korean offensive of June 1950, rather than staying to face capture or death.

Q19

President Syngman Rhee's wife had an unusual background for a First Lady of the ROK. Where was she born?

A19 New Jersey, Denmark, Austria, Hawaii

Q20 [Explanation]



Juche is flavored with very strong ethnocentrism and traditional familial values enlisted in the service of the state. It's also very hard to define. Korea expert Bruce Cumings has this to say: "The more one seeks to understand Juche, the more the meaning recedes. It is a state of mind, not an idea, and one that is unavailable to the non-North Korean. It is the opaque core of what one could call North Korean national solipsism."

Q20

What is the uniquely North Korean ideology developed by Kim Il-Sung?

A20 Juche

Q21 [Explanation]



Park and his bodyguard were dining with Kim Chae-gyu, director of the Korean Central Intelligence Agency, at a KCIA safe house in Seoul. An altercation broke out, and Kim shot and killed Park after putting his first bullet into the bodyguard.

Q21

ROK President Park Chung-hee was assassinated on October 26, 1979. Who was responsible?

A21 Student radicals. No one knows for sure. His own spy chief. North Korean infiltrators.

Q22 [Explanation]



All four served as president of the ROK. Chun was a military man who cracked down hard after Park's assassination. Roh, a transitional figure, had also been a general and was Chun's hand-picked successor. Kim Young-sam took office in 1993, and was succeeded by Kim Dae-jung in 1998.

Q22

President Syngman Rhee was ousted by a military coup in 1960, after which South Korea was ruled by a series of military men. Who was the first subsequent ROK president NOT to come from a military background?

A22 Roh Tae-woo, Kim Dae-jung, Kim Young-sam, Chun Doo-hwan

Q23 [Explanation]



Park Chung-hee and Chun Doo-hwan both hailed from the Kyongsang provinces of southeastern South Korea, as did Chun's successor Roh Tae-woo. The Cholla provinces in the southwest were relatively disadvantaged, politically and economically, during the era of military rule.

Q23

Which region (outside the capital itself) dominated South Korean politics from 1960 through the early 1990s?

A23 Cholla, Kyongsang, Kangnung, Hwanghae

Q24 What is the national sport of South Korea?

A24 Judo, Taekwondo, Jiu jitsu

Q25 [Explanation]



Taekwondo is a Korean martial art, characterized by punching and kicking techniques, with emphasis on head-height kicks, jumping spinning kicks, and fast kicking techniques.

Q25

The traditional Korean martial art known as Taekwondo was initially called Tae Soo Do. 'Tae' means 'to stomp' and 'do' means 'the way of', but what do 'soo' and 'kwon' mean?

A25 Hand and fist

Q26 [Explanation]



The 100-won coin features an image of admiral Yi Sun-sin, a national hero who fought against the Japanese in the 16th century, but the image is based on a painting by Chang Woo-sung, who was born in 1912 and lived to 2005.

Q26

Who is the person on the back of the 100 won coin?

A26 Admiral Yi Sun-sin

Q27 [Explanation]



The first birthday is called a “dol” (돌) in Korean. This celebration was extremely important in the past as many newborns never made it to the first birthday due to lack of medicinal knowledge and childhood disease so when a child made it through the first year, a huge celebration would take place.

Q27

What is the name of a baby’s first birthday in Korean?

A27 Dol

Q28 [Explanation]



The hanbok is the traditional Korean clothes. The term “Hanbok” literally means “Korean clothing”. It was established as a part of the unique living culture of Korea, influenced by the geographical and climatic nature of Korea, and handed down throughout the years to present times.

Q28

What is the traditional dress of Korea called?

A28 Kimono, Hanguk, Hanbok, Kirmona

Q29 [Explanation]



Kim Nam-joon, better known by his stage name RM (formerly Rap Monster), is a South Korean rapper, songwriter and record producer. He is the leader of the South Korean boy band BTS.

Q29

Who is the leader of BTS?

A29 V, Jimin, RM, Jungkook

Q30 [Explanation]



Kimchi is a traditional Korean dish consisting of pickled vegetables, which is mainly served as a side dish with every meal, but also can be served as a main dish. Kimchi is mainly recognized as a spicy fermented cabbage dish globally.

Q30

What is Kimchi?

A30 K-pop band, traditional meat dish, spicy vegetable dish

Q31 [Explanation]



According to Korean age reckoning, the Korean New Year is similar to a birthday for Koreans, and eating tteokguk is part of the birthday celebration. Once a person has finished eating their tteokguk, they are one year older.

Q31

When do Koreans traditionally add another year to their age?

A31 Seollal - Lunar New Year, Chuseok - Harvest Moon, Their actual birth date

Q32 [Explanation]



About 20 percent of South Korea's population has the family name Kim. Lee is the second most common name, and Park (or Pak) is the third.

Q32

What is the most popular Korean family name?

A32 Park, Lee, Kim

Q33 [Explanation]



Q33

Aside from North Korea, how many countries share a land border with South Korea?

A33 0, 1, 3, 6

Q34 [Explanation]



The National Assembly of the Republic of Korea, often shortened to the National Assembly in domestic English-language media, is the unicameral national legislature of South Korea. Elections for the National Assembly are held every four years.

Q34

South Korea's legislature includes which of the following houses?

A34 National Assembly, Council of Provinces, Senate, All of the above

Q35 [Explanation]



Moon Jae-in is the current president of South Korea, having taken office in 2017.

Q35

Who is the current president of South Korea?

A35 Kim Il-sung, Moon Jae-in, Syunman Rhee, Park Chung-hee

Q36 [Explanation]



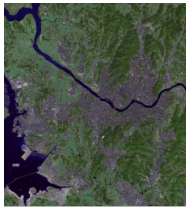
The ROK Armed Forces is one of the largest standing armed forces in the world with a reported personnel strength of 3,305,000 in 2020 (555,000 active and 2,750,000 reserve). South Korea has the world's tenth-largest budget and the ROK Armed Forces are ranked as the sixth most powerful military as of 2020, and 2021.

Q36

North Korea is reported to have almost 1.3 million active military troops. Roughly how many does South Korea have?

A36 275,000, 555,000, 990,000, 1.4 million

Q37 [Explanation]



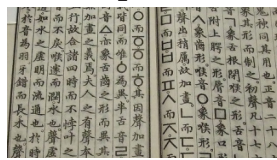
The river begins as two smaller rivers in the eastern mountains of the Korean peninsula, which then converge near Seoul, the capital of the country.

Q37

Which river divides Seoul?

A37 Han, Kum, Naktong, Somjin

Q38 [Explanation]



Hanja is the Korean name for a traditional writing system consisting mainly of Traditional Chinese characters that was incorporated and used since the Gojoseon period (400 BCE).

Q38

What is the name of the Chinese characters that were used to write Korean with (and is still partially in use today)?

A38 Hanja, Hangul, Hanzi

Q39 [Explanation]



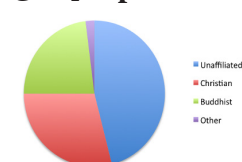
In 1938 Lee Byung-chull founded the company in Daegu city, Korea, and they produced their own noodles. Many years later, after the Korean war, Samsung moved to Seoul and entered the electronic industry.

Q39

What business did Samsung initially start?

A39 Appliances retail, Noodle making, Shipping goods

Q40 [Explanation]



South Korea has no majority religious group. Its population includes a plurality of people with no religious affiliation (46%) and significant shares of Christians (29%) and Buddhists (23%).

Q40

What is the leading religion in South Korea?

A40 Confucianism, Christianity, Buddhism

Q41 [Explanation]



Roseanne Park, better known by the mononym Rosé, is a Korean-New Zealand singer and dancer based in South Korea.

Q41

Where was Rose from Blackpink born?

A41 Sydney Australia, Busan South Korea, Auckland New Zealand, Seoul South Korea

Q42 [Explanation]



“Whistle” (Korean: 휘파람) is a song recorded by South Korean girl group Blackpink. It was released through YG Entertainment on August 8, 2016 simultaneously with “Boombayah”; both tracks comprise the group’s debut single album titled Square One (2016).

Q42

Which songs did Blackpink debut with?

A42 Ddu-Du Ddu-Du/Playing with Fire, Kill This Love/Sour Candy, Whistle/Boombayah, Lovesick Girls/Pretty Savage

Q43 [Explanation]



Q43

Which K-pop boyband’s fan club is named Monbebe?

A43 Got7, Big Bang, iKon, Monsta X

Q44 [Explanation]



Seo Taiji and Boys is the first band that resembles the K-pop music and mega fandom we have today. Seo Taiji revolutionized Korean Pop music by merging it with popular American music. They coupled the new brand of music with hip-hop choreography, and K-pop was born. Seo Taiji and Boys were the first-ever K-pop group.

Q44

Which band started K-pop?

A44 DBSK, Seo Taiji & Boys, Super Junior, H.O.T

Q45 [Explanation]



Bae Suzy, is a South Korean singer, actress and model. She was a member of the girl group Miss A under JYP Entertainment.

Q45

Which girl group was Suzy a part of?

A45 Miss A

Q46 [Explanation]



Dramas usually air two episodes a week, one after the other, with the following episodes having to be shot within the intervening five days.

Q46

Korean dramas are broadcast: once a week, twice a week or three times a week. Please choose the correct answer. A46 Twice a week

Q47 [Explanation]



The Korea Drama Awards (Korean: 코리아 드라마 어워즈) is an awards ceremony for excellence in television in South Korea. It was established in 2007, and is held annually in October in Jinju, South Gyeongsang Province as the official main event of the annual Korea Drama Festival (which was launched a year ago).

Q47

What is the Oscar for Korean movies and series?

A47 Baeksang Arts Awards, The Korea Drama Awards, KBS Drama Award

Q48 [Explanation]



The Korean Wave (Hallyu) refers to the global popularity of South Korea's cultural economy exporting pop culture, entertainment, music, TV dramas and movies. Hallyu is a Chinese term which, when translated, literally means "Korean Wave".

Q48

Why are Korean dramas so popular?

A48 Because of Netflix, Because of the Korean wave, Because of Psy

Q49 [Explanation]



Lee Jin-ki, better known by his stage name Onew, is a South Korean singer and actor. He debuted as one of the lead vocalists and leader of boy band Shinee in May 2008, who went on to become one of the best-selling artists in South Korea.

Q49

Onew is a member of which Idol group?

A49 SHINee

Q50 [Explanation]



Shinee debuted in May 2008 with their first EP Replay which spawned the single "Noona Neomu Yeppeo" and their first studio album The Shinee World.

Q50

What's the name of SHINee's debut song?

A50 Noona, You're So Pretty

Q51 [Explanation]



“Wolf” (Korean: 늑대와 미녀) is a song by South Korean–Chinese boy band Exo, released on May 30, 2013, as the lead single of their first studio album XOXO.

Q51

With which song did EXO win their first music show award?

A51 Wolf

Q52 [Explanation]



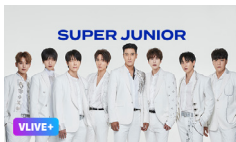
Buddy is the official fandom name for the South Korean girl group GFriend.

Q52

If you are a Gfriend fan, are you a buddy or a moomoo?

A52 Buddy

Q53 [Explanation]



Super Junior (Korean: 슈퍼주니어; Syupeo Junio), also known as SJ or SuJu, is a South Korean boy band debuted on November 6, 2005, by producer Lee Soo-man of SM Entertainment. They are also dubbed by the media as the “King of Hallyu Wave” due to their prominent contributions in Korean Wave.

Q53

Which group has won the Golden Disk Daesung awards 4 years in a row?

A53 Super Junior

Q54 [Explanation]



Psy performing a comical horse-riding dance and appearing in unexpected locations around the Gangnam District, such as an outdoor yoga session and a hot tub.

Q54

What K-Pop song has topped charts around the world with its catchy tune and ‘horse dance’?

A54 Gangnam Style

Q55 [Explanation]



Mama is the debut studio extended play (EP) by South Korean-Chinese boy band Exo-K and Exo-M. It was released by SM Entertainment on April 9, 2012 in two language editions – Exo-K’s Korean version and Exo-M’s Mandarin version.

Q55

Which K-pop boy group debuted with the album “Mama”?

A55 Exo

Q56 [Explanation]



Day6 (Korean: 데이식스) is a South Korean pop rock band under the label JYP Entertainment. The group debuted on September 7, 2015, with EP The Day, which peaked at No. 2 on Billboard’s World Album Chart a week following its release.

Q56

How many members are there in Day6?

A56 5

Q57 [Explanation]



Teen Top (Korean: 틴탑) is a South Korean boy band formed by TOP Media in 2010. The group is composed of five members: C.A.P, Chunji, Niel, Ricky and Changjo.

Q57

Which K-pop boy group contains two members who began as child actors?

A57 Teen Top

Q58 [Explanation]



Q58

Which two members of BTS were born in Busan?

A58 Jimin and Jungkook

Q59 [Explanation]



Alive is the fifth Korean-language extended play by South Korean group Big Bang. It was released on February 29, 2012 by YG Entertainment. Big Bang members G-Dragon and T.O.P wrote the music and lyrics, respectively, for nearly all tracks on the album. The EP Alive became the first K-pop album to chart on the United States' Billboard 200.

Q59

Which album by Big Bang was the first Korean album to chart on Billboard?

A60 Alive

Q60 [Explanation]



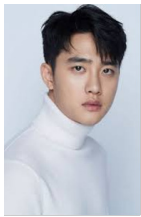
Big Bang is a South Korean boy band formed by YG Entertainment in 2006.

Q60

In what year did Big Bang begin?

A60 2006

Q61 [Explanation]



Doh Kyung-soo, better known by his stage name D.O., is a South Korean singer-songwriter and actor. He is best known as a member and one of the main vocalists of the South Korean boy group Exo.

Q61

Which EXO member is known for their acting?

A61 D.O.

Q62 [Explanation]



- A special organization of the UN installed for the relief of war victim children and improvement of the welfare of children in less developed countries
- Korea was supported by this organization beginning in 1950, but it has been a donor country since 1994.
- BTS, the famous K-pop band of Korea, participated in the “ENDviolence” campaign of this organization in order to eradicate violence against children and youth throughout the world.

Q62

What international organization is the passage referring to?

A62 UNICEF

Q63 [Explanation]



Parasite (Korean: 기생충; RR: Gisaengchung) is a 2019 South Korean black comedy thriller film directed by Bong Joon-ho, who co-wrote the screenplay with Han Jin-won.

Q63

What is the name of the movie which won the best director, best original screenplay, and best International Feature Film becoming the first non-English language film to win the 92nd Academy Awards in 2020?

A63 Parasite

Part 4 : WFWP



Q1

What was the name of the UN event WFWP participated in at Gyeongju in 2016?

A1 The 66th UN DPI/NGO Conference



Q2

IAFLP stands for?

A2 International Association of First Ladies for Peace



Q3

Where is the official launching place of IAFLP?

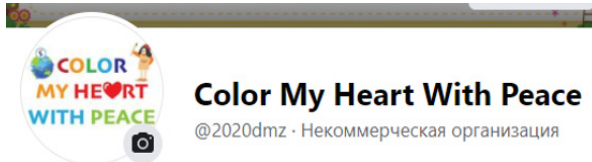
A3 Palau, Korea, Japan, USA



Q4

What is the name of the WFWPI art contest for children that started in 2020 to promote the reunification of the Korean Peninsula all over the world?

A4 Color My Heart with Peace



Q5

What is the Facebook page name of Color My Heart with Peace?

A5 2020dmz

Q6

When has the project to eradicate poverty '1% Love Share Project' started to help needy North Korean women and children?

A6 2002

Q7

What is the project name of a reunification education for middle school and high school students created by the WFWP Korea?

A7 Tongilhae Dream

Q8

Since what year has WFWP Korea registered with the Ministry of Unification?

A8 1999

Q9

WFWP Korea started the petition campaign for creating what?

A9 5th UN office in Asia